



## 47 Upland Drive

Derriford, Plymouth, PL6 6BE

£310,000



A detached bungalow located on a popular residential road in Derriford in need of some modernisation, being sold vacant with no onward chain, probate granted. The accommodation comprises an entrance hall, lounge/diner, kitchen, 3 bedrooms, wc & bathroom. The property has the benefit of recently replaced radiators throughout the house. There is a driveway allowing off-road parking for 2 vehicles to the fore of the single garage. A lawned front garden & enclosed south-facing rear garden, which is terraced & has 2 garden sheds.



## UPLAND DRIVE, DERRIFORD, PLYMOUTH, PL6 6BE

### ACCOMMODATION

Entrance via a uPVC obscured double-glazed door which opens into the entrance hall.

### ENTRANCE HALL 7'2" x 3'10" (2.19m x 1.18m)

A couple of steps lead up to the entrance into the lounge. A door opens into the inner hallway.

### LOUNGE 15'8" x 11'5" (4.8m x 3.5m)

Feature fireplace with a tiled hearth, mantle & surround, inset gas fire. uPVC double-glazed window to the rear. The room opens into the dining area.

### DINING AREA 10'4" x 6'3" (3.15m x 1.93m)

uPVC double-glazed window to the side. Concertina door opens into the kitchen.

### KITCHEN 9'10" x 8'10" (3.02m x 2.71m)

Matching base & wall mounted units to include space for a cooker, washing machine & fridge. A roll edge laminate worktops have inset stainless steel sink unit with single drainer. Wall mounted Ideal boiler. Tiled splash-back. uPVC double-glazed window to the rear. Obscured uPVC double-glazed door opening to the side & rear garden.

### INNER HALLWAY

Doors leading to the bedrooms, bathroom & wc. Access hatch to roof void.

### BEDROOM ONE 14'4" x 9'6" (4.39m x 2.91m)

uPVC double-glazed window to the front. Fitted wardrobe with overhead storage unit.

### BEDROOM TWO 10'6" x 8'11" (3.22m x 2.73m)

uPVC double-glazed window to the front. Fitted wardrobe with overhead storage unit.

### BEDROOM THREE 8'11" x 7'6" (2.73m x 2.29m)

uPVC double-glazed window to the side.

### BATHROOM 5'4" x 4'11" (1.65m x 1.51m)

Matching suite of panelled path & pedestal wash hand basin. Part-tiled walls. Obscured uPVC double-glazed window to the side. Heated towel rail.

### WC 5'4" x 2'7" (1.65m x 0.79m)

Low level wc. Obscured uPVC double-glazed window to the side.

### OUTSIDE

The property is approached via a driveway allowing off-road parking for 2 vehicles to the fore of the single garage. The main front garden is laid to lawn. To the rear an enclosed south-facing garden which is laid out over a couple of terraces & a path leading up one side. A coal bunker. Terraces mainly laid to lawn, one has a patio inset, two sheds towards the rear boundary.

### COUNCIL TAX

Plymouth City Council

Council Tax Band: D

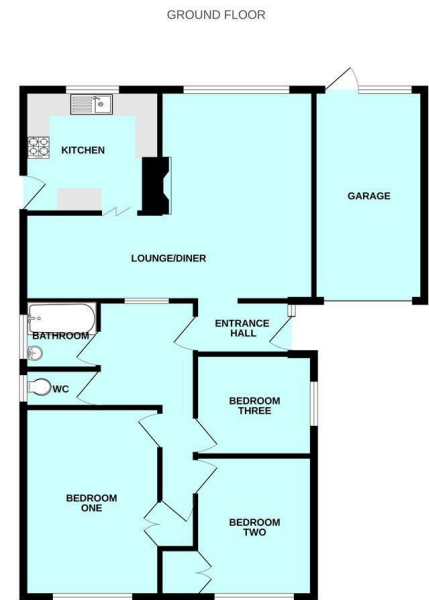
### SERVICES

The property is connected to all the mains services: gas, electricity, water and drainage.

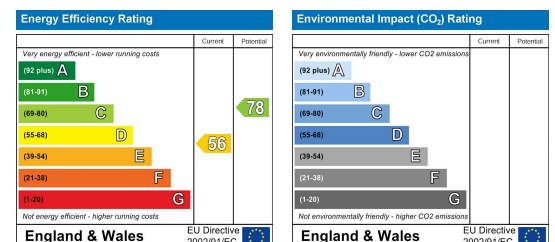
## Area Map



## Floor Plans



## Energy Efficiency Graph



These particulars, whilst believed to be accurate are set out as a general outline only for guidance and do not constitute any part of an offer or contract. Intending purchasers should not rely on them as statements of representation of fact, but must satisfy themselves by inspection or otherwise as to their accuracy. No person in this firm's employment has the authority to make or give any representation or warranty in respect of the property.